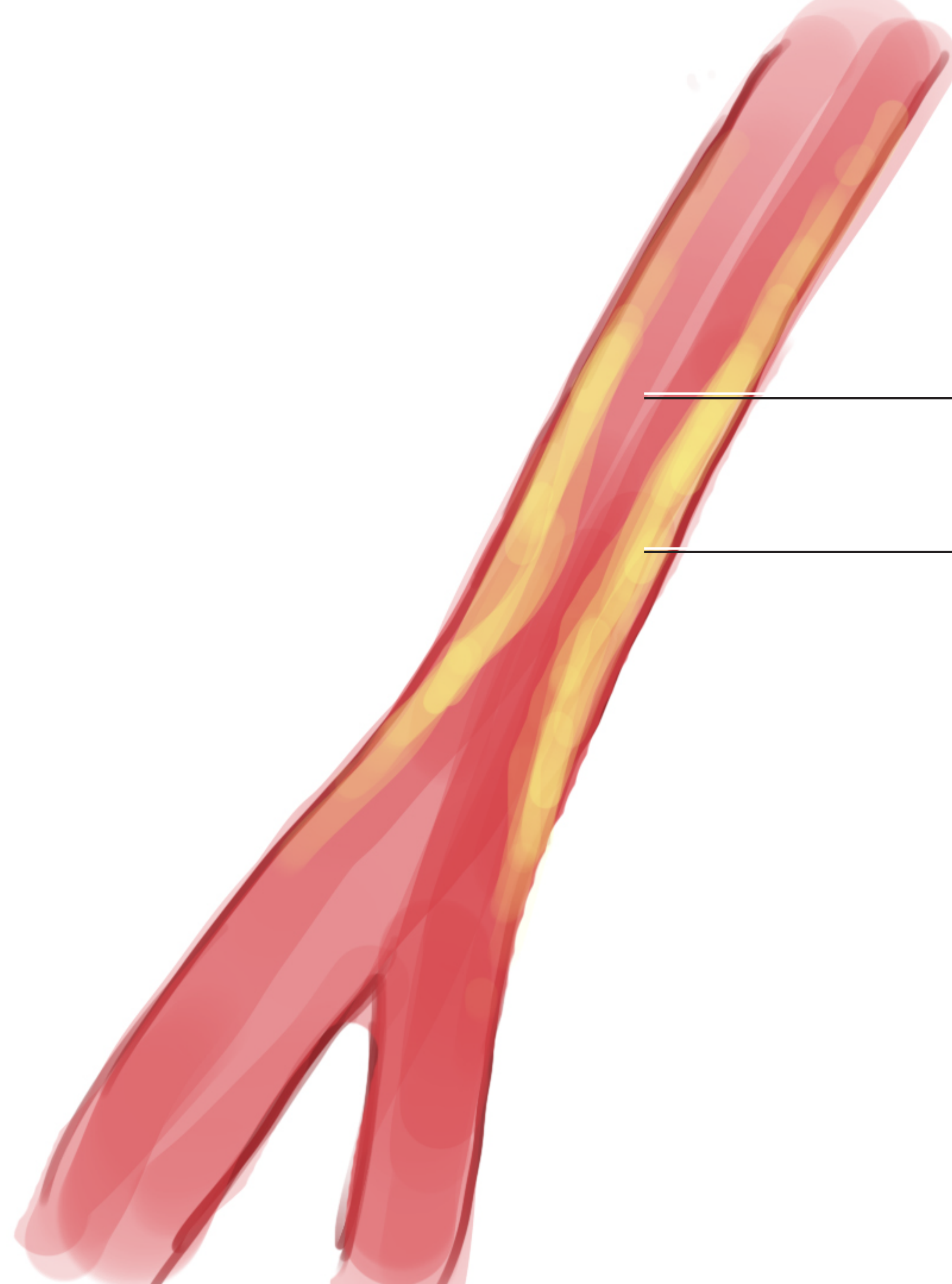


MSC2016

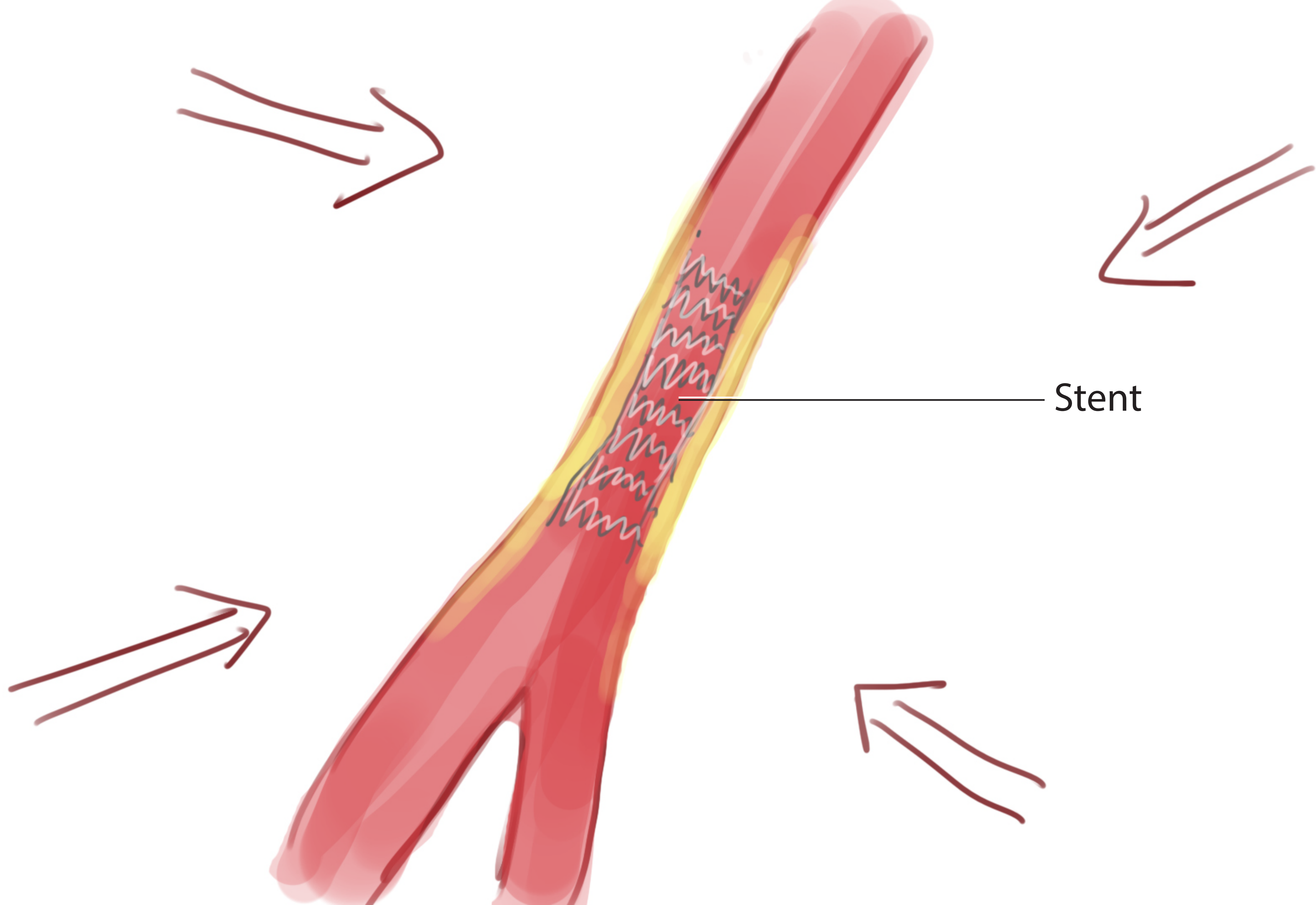
Assignment 1 - Storyboard

Wendy Gu
September 26th, 2015



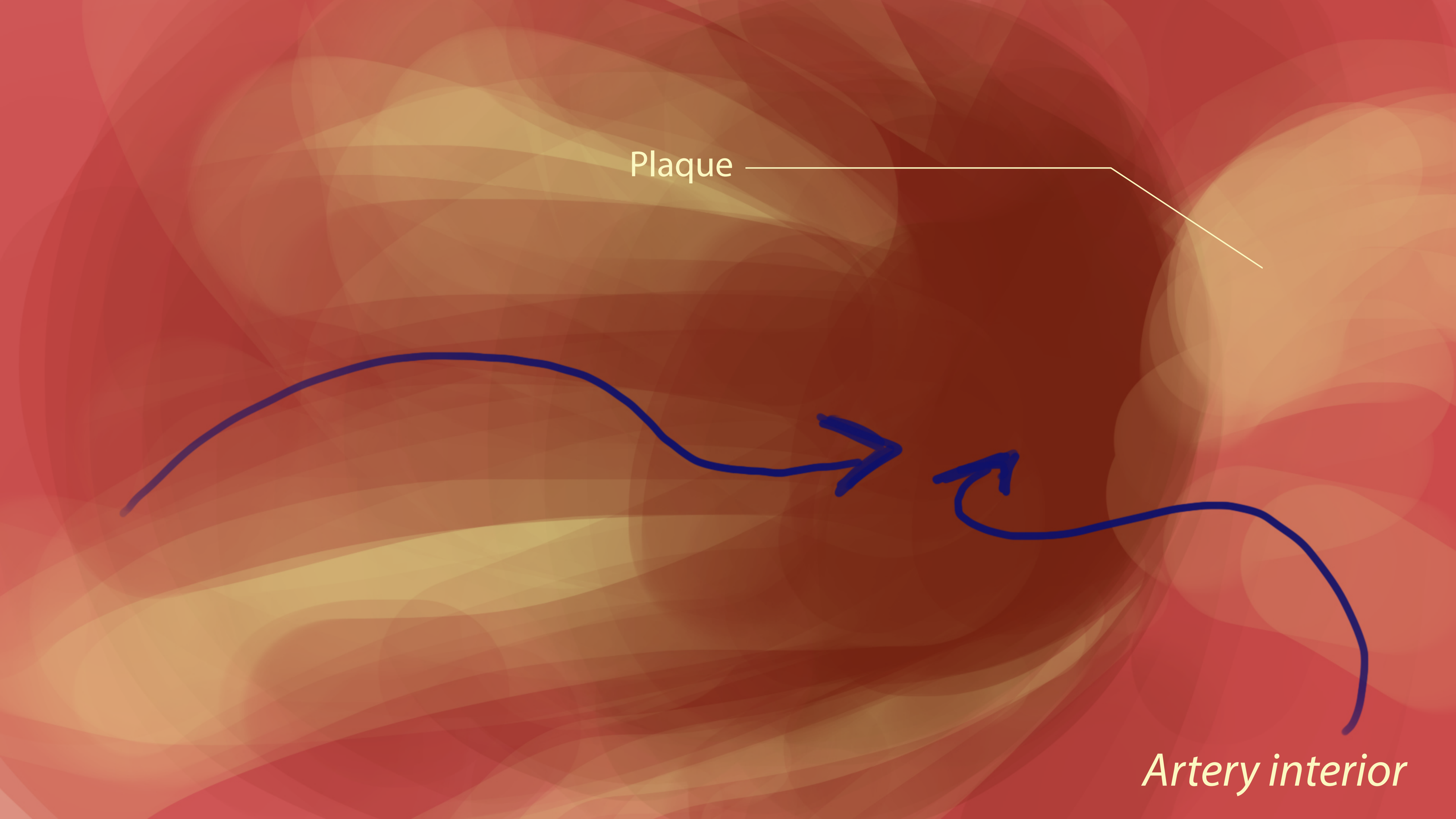
Artery

Plaque



Plaque

Artery interior



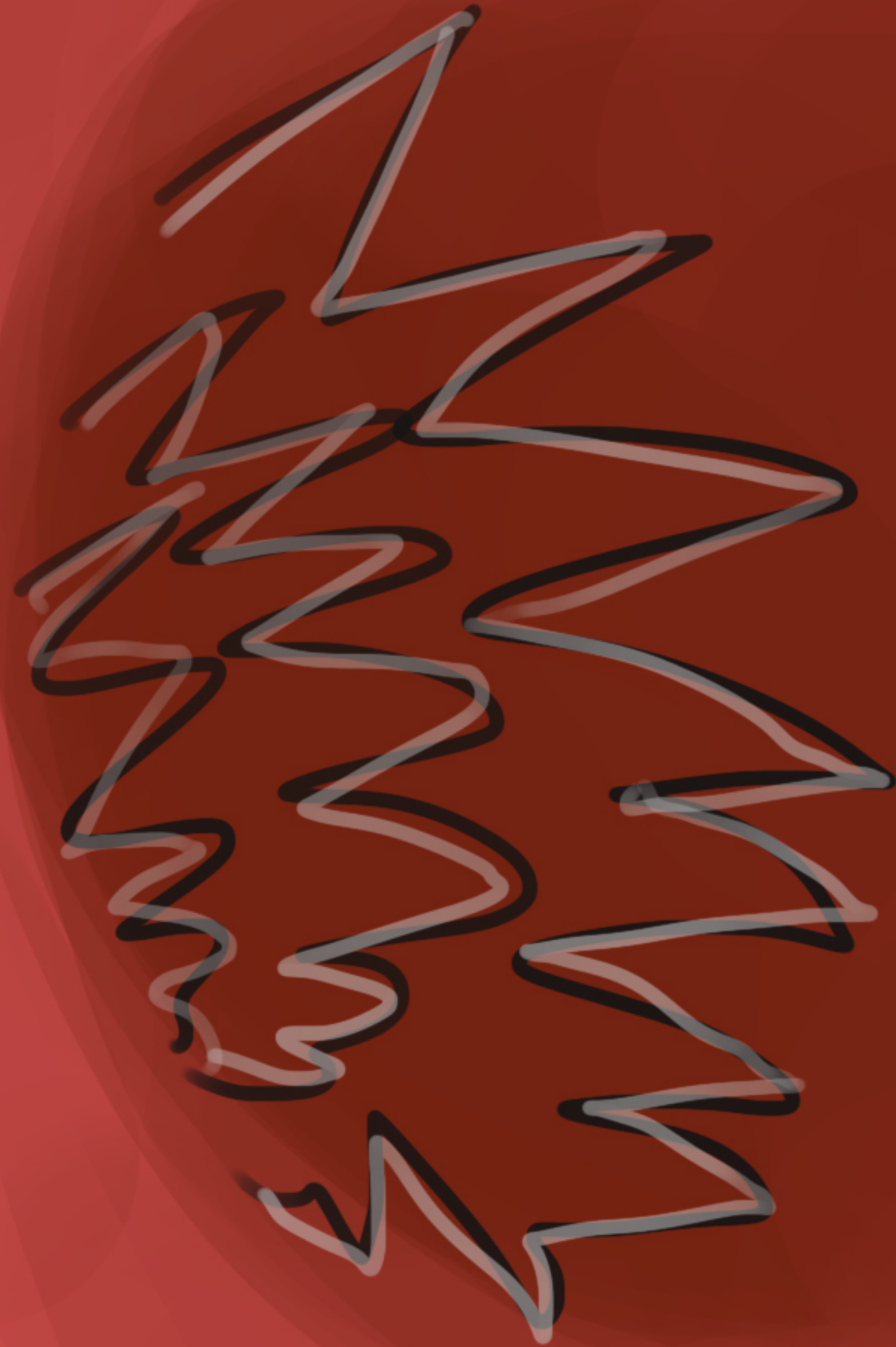


Artery interior



Stent

Artery interior



Artery interior



Terence Donnelly
Health Sciences Complex

Treatment

- Scene begins with view of an artery with plaque ghosted in. Stent ghosts in
- Dolly towards the artery, transition into the interior of the artery
- Camera travels through the artery like a red blood cell, encounters plaqued area and slows down, squeezes

through the narrowed vessel with turbulent movement

- Camera travels through the artery as it turns
- Camera travels through the stented artery at a much faster and smoother pace than plaqued artery (Similar camera movement as when it went through the regular artery)
- Camera then turns 180 degrees, zooms in + pans up
- Red blood cells flash in and fill up the scene. Logo appears